

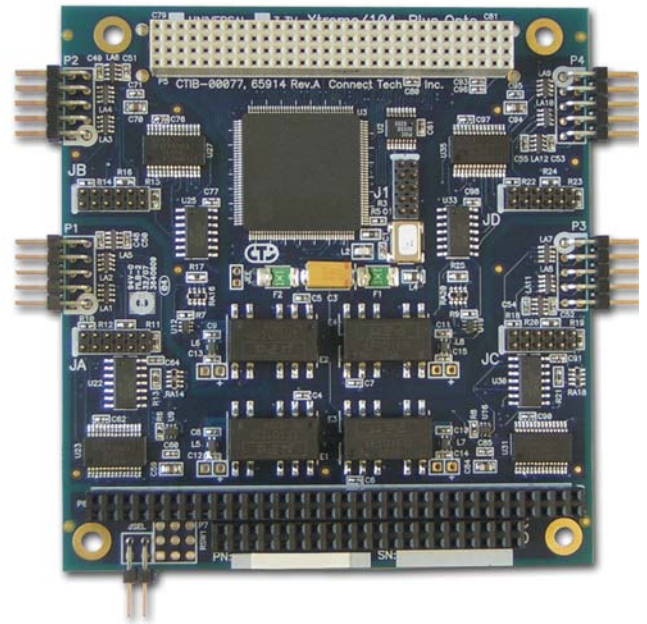
Xtreme/104-Plus Opto

Serial Communications


Xtreme/104-Plus Opto

Features

- PC/104-Plus
- Two or four ports individually optically isolated
- Switchable RS-232/422/485
- Supports full duplex (4 wire) with RTS/CTS flow control, half duplex (2 wire) with auto TxD echo cancellation and multi-drop (4 wire) modes in RS-422/485
- Bi-directional data speeds up to 1.843 Mbps (RS-422/485)
- Selectable for tri-state on power up in RS-422/485 mode
- 3kV optical isolation
- Operating temperature range of -40°C to 85°C
- RoHS compliant



Specifications

| | |
|-------------------------------|---|
| Number of Ports | 2 or 4 ports |
| Electrical Interface | Hardware selectable RS-232/422/485 |
| Connectors | 2 port model: two 10-pin, .100" right angled connectors 4 port model: four 10-pin, .100" right angled connectors |
| Control Signals | RS-232: TxD, RxD, RTS, CTS, SG (Signal Ground) RS-422/485: TxD+/-, RxD+/-, RTS+/-, CTS+/-, SR (Signal Return) |
| Baud Rate | RS-232: 50 bps to 921.6 Kbps RS-422/485: 50 bps to 1.8432 Mbps |
| Interrupts | Assigned by Plug and Play resources |
| Memory Addresses | Assigned by Plug and Play resources |
| UART Type | One quad PCI UART with up to 64 byte transmit and receive FIFO buffers |
| Dimensions | Fully PC/104-Plus compliant |
| Environmental | Operating Temperature: -40° C to 85° C (-40° F to 185° F) Storage Temperature: -40° C to 125° C (-40° F to 257° F) Humidity: 95% non-condensing |
| Bus | 3.3 V or 5V PC/104-Plus or PCI-104 |
| Software Compatibility | Windows 2000/XP/CE/XPe/Vista, QNX 4/6, Linux  |
| Optical Isolation | 3kV optical isolation |
| System Requirements | +5V DC 500mA (max.) V/I/O of +5V or +3.3V DC |

Connect Tech's robust Xtreme/104-Plus product family has introduced optical isolation as an additional feature to its product offering. Xtreme/104-Plus Opto provides the added protection of 3kV optical isolation on a rugged and compact form factor for your critical applications.

PCI 2.3 and PC/104 2.0 compliant, Xtreme/104-Plus Opto cards include a PC/104 pass-through connector for compatibility with legacy PC/104 cards.

Dependability, high speed data transfer rates and 3kV of optical isolation protection makes these cards ideal in environments where harsh conditions may disrupt communications.

Use Xtreme/104-Plus Opto for embedded systems in the military, aerospace, medical and industrial sectors. Lifetime Warranty and free technical support is also included.



Connect Tech Inc.
Industrial Strength Communications

42 Arrow Road
Guelph, ON, Canada
N1K 1S6
www.connecttech.com

Phone: 1-519-836-1291
Toll free (in North America): 1-800-426-8979
Fax: 1-519-836-4878
Email: sales@connecttech.com